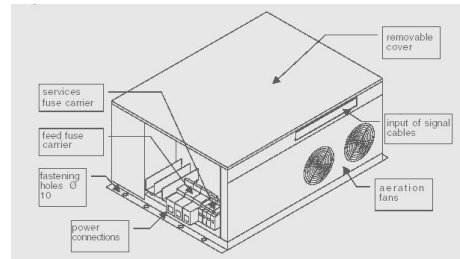
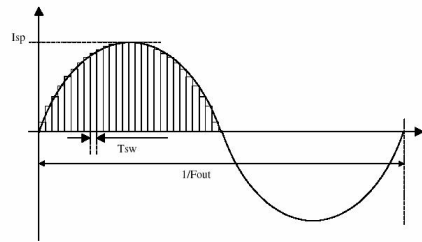


TRISTATIC : Static Frequency Converter

Electronic welding control to improve performance due to the possibility to fine tuning the system according to the customer requirements

Main advantages:

- proven energy savings (approx 60-70%)
- balanced 3-phase during operation with Cos-Phi of 0,95%.
- possibility to adjust the length of the welding spot can be adjusted according to needs
- better quality and greater flexibility for different materials to be welded thanks to the increased number of hertz available.
- Reduced noise emission and vibrations

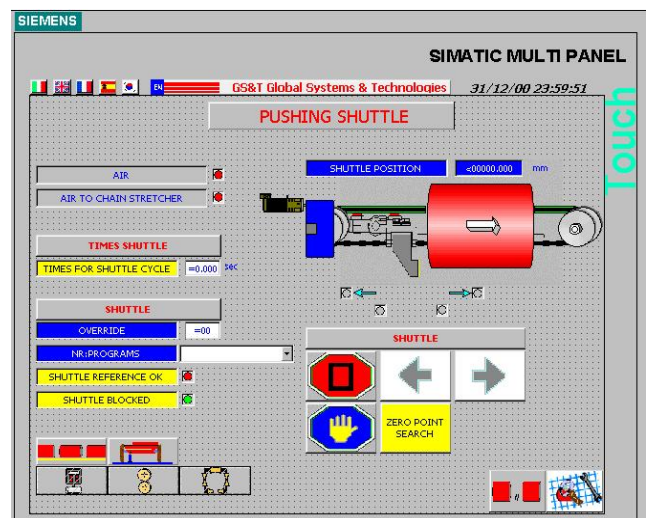
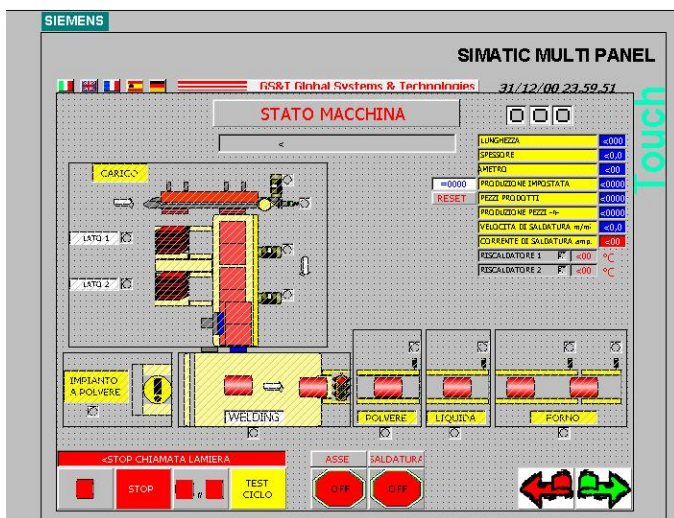


TOUCH SCREEN FULL CONTROL PANEL

Control of the whole line by specially designed interface software running on a full color Touch Screen. All the machine functions, settings and troubleshooting are managed in real time thanks to our user friendly operator panel, with easy and immediate access to controls by symbols and graphics.

Main advantages:

- full control of the machine operating conditions
- display and control step by step of all the machine groups
- multilanguage display information



More in second page

QUICK TOOL CHANGE

Unique machine design to allow fully automatic and trouble free quick change of different diameter tools on steel drum welding machines. With one touch on the control panel, the operator can carry out the diameter tool change including all the settings of machine working parameters. Complete diameter changeover time on a steel drum welding machine requires only a few minutes.

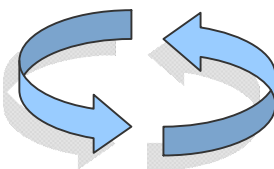
Main advantages:

- saved time for changeover = more efficiency and production flexibility
- less or no scraps after changeovers
- cost reduction : no more many single diameter calibrations to buy



From Ø 500 mm conical drum....

in 2 minutes...



...to standard Ø 571,5 mm, 200lt.drums